

Eb  
 Bb Db B  
 Ab Gb  
 A F G  
 D E C  
 B A F  
 G E D  
 C

tonic  
 1st  
 0° 1/1  
 major 7th  
 11° 15/8  
 minor 7th  
 10° 9/5  
 major 2nd  
 1° 25/24  
 minor 2nd  
 2° 9/8  
 major 3rd  
 3° 6/5  
 minor 3rd  
 4° 5/4  
 major 4th  
 5° 4/3  
 minor 4th  
 3° 3/2  
 major 5th  
 6° 45/32  
 perfect 5th  
 7° 3/2  
 perfect 6th  
 9° 5/3  
 major 6th  
 10° 9/5  
 minor 6th  
 7th  
 11° 15/8  
 major 7th

# Gb (6 b)

Eb  
 Bb Db  
 Ab Gb

A  
 F  
 G  
 D  
 B  
 C  
 E  
 C  
 G  
 F  
 D

C D E F G A B

tonic  
 1st  
 0°  
 1/1

major 7th  
 11°  
 15/8

minor 7th  
 10°  
 9/5

major 6th  
 9°  
 5/3

minor 6th  
 8°  
 8/5

major 5th  
 7°  
 3/2

minor 5th  
 6°  
 45/32

major 4th  
 4°  
 5/4

minor 4th  
 3°  
 6/5

major 3rd  
 2nd  
 9/8

minor 3rd  
 1°  
 25/24

major 2nd  
 1°  
 9/8

minor 2nd  
 1°  
 25/24

major 1st  
 0°  
 1/1

C G D A E B  
 F Bb Eb Gb Ab

F, C, F, c, f, c',  
 G, D, G, d, g,  
 A, E, A, e, a,  
 B, B, B, b, b

# Db (5 b)

0  
 1  
 2  
 3  
 4  
 5  
 6  
 7  
 8  
 9  
 10  
 11  
 12

A  
F  
D  
B  
G  
E  
C
G  
E  
C  
A  
F  
D

Eb      Bb      Db      Ab

tonic  
1st

# Ab (4 b)

Fret	String 1	String 2	String 3	String 4	String 5	String 6
0	G					
1	Ab	E	B	f		
2						
3	Bb	F	c	g		
4				D	Ab	
5	C	G				
6	D	Ab	e	b		
7						
8	E	B	f	c'		
9						
10	F	c	g			
11		D	Ab	e'		
12	G					

A  
F  
D  
B  
G  
E  
C

G  
E  
C  
A  
F  
D

E<sub>b</sub>  
B<sub>b</sub>  
A<sub>b</sub>

C D E F G A B b

tonic  
1st  
0°  
1/1

major  
7th  
11°  
15/8

minor  
7th  
10°  
9/5

major  
6th  
9°  
5/3

minor  
6th  
8°  
8/5

major  
5th  
7°  
4/3

perfect  
5th  
6°  
45/32

tritone  
6°  
45/32

major  
3rd  
3rd  
6/5

minor  
3rd  
3rd  
9/8

major  
2nd  
2nd  
9/8

minor  
2nd  
1°  
25/24

major  
2nd  
1°  
25/24

major  
3rd  
3rd  
6/5

minor  
3rd  
3rd  
9/8

major  
2nd  
2nd  
9/8

minor  
2nd  
1°  
25/24

major  
7th  
11°  
15/8

minor  
7th  
10°  
9/5

major  
6th  
9°  
5/3

minor  
6th  
8°  
8/5

major  
5th  
7°  
4/3

perfect  
5th  
6°  
45/32

tritone  
6°  
45/32

major  
3rd  
3rd  
6/5

minor  
3rd  
3rd  
9/8

major  
2nd  
2nd  
9/8

minor  
2nd  
1°  
25/24

major  
2nd  
1°  
25/24

major  
3rd  
3rd  
6/5

minor  
3rd  
3rd  
9/8

major  
2nd  
2nd  
9/8

minor  
2nd  
1°  
25/24

F G A B C D E F G A B C

### E<sub>b</sub> (3 b)

0 G, D

1 A, E, B, f

2

3 B, F, c, g

4

5 C, G, d, a

6 E, A, e, b

7 D

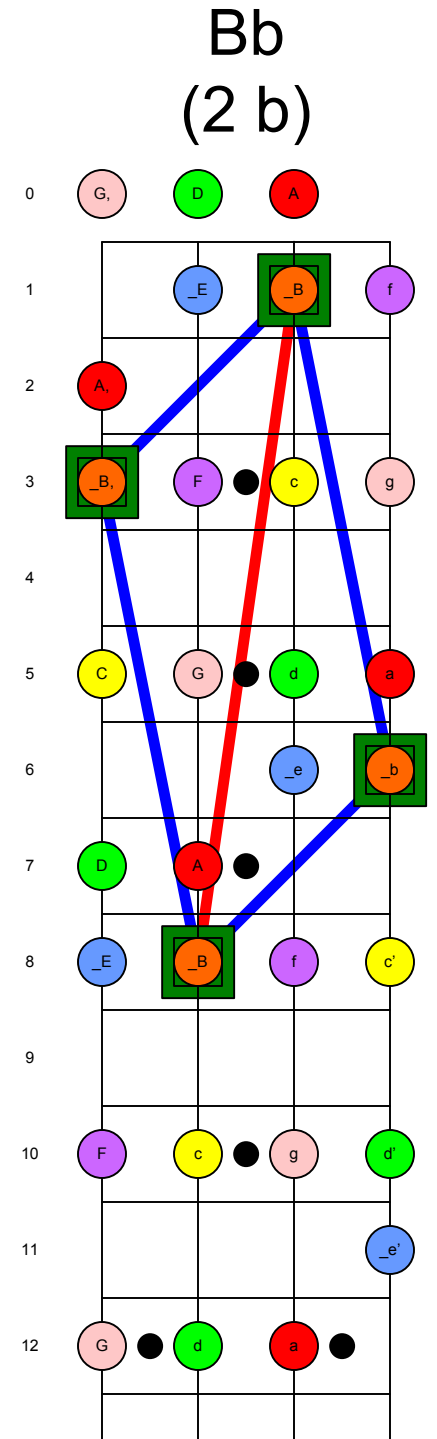
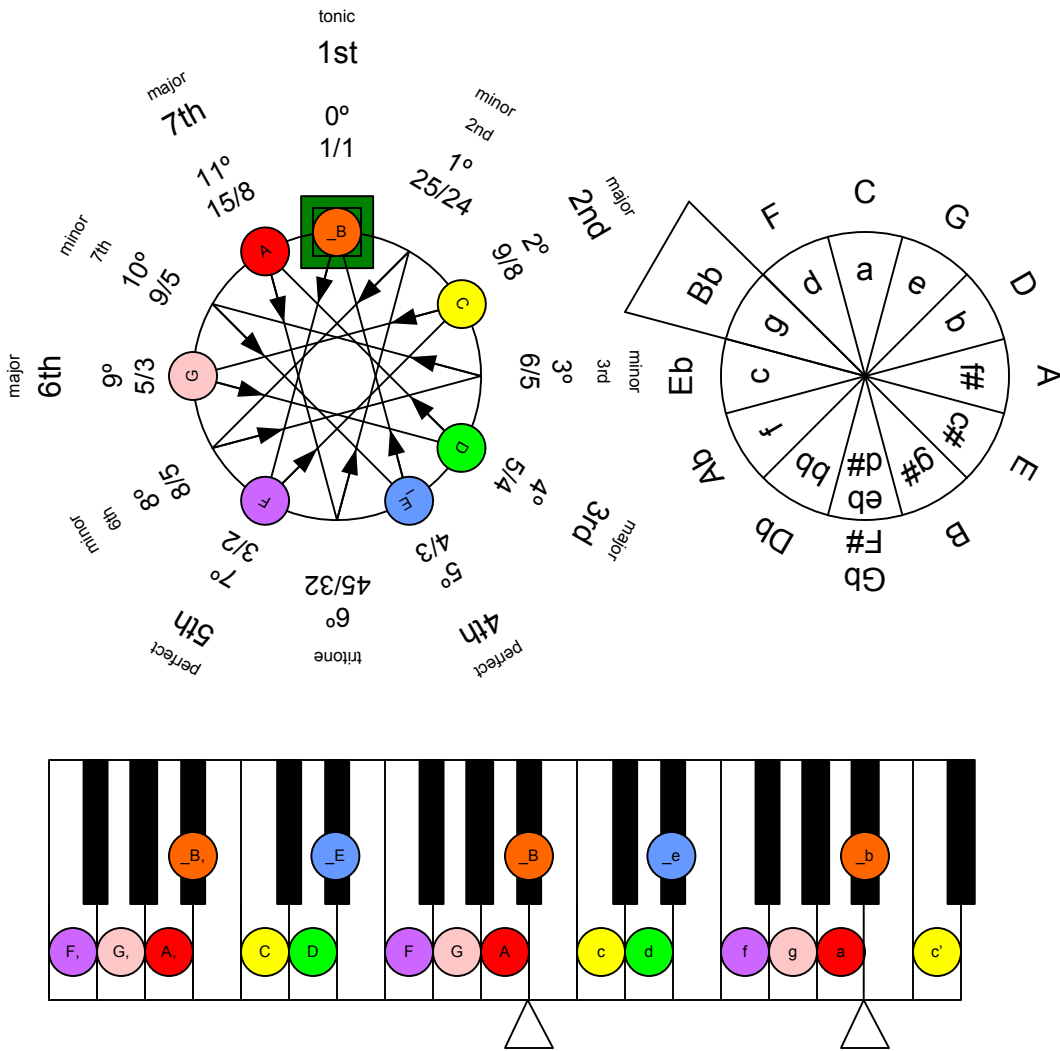
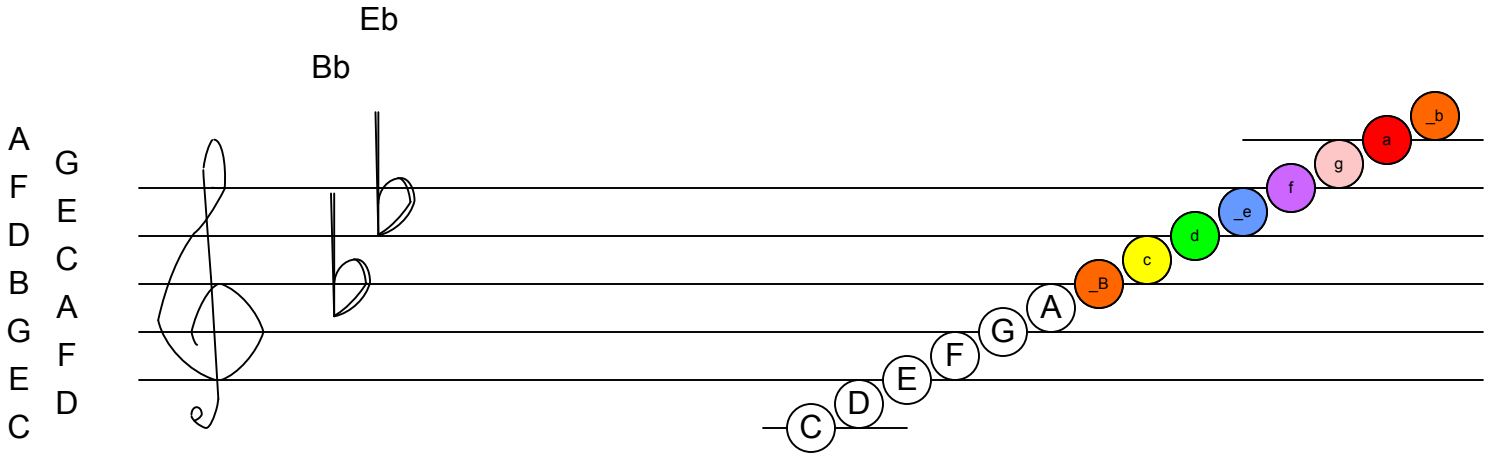
8 E, B, f, c'

9

10 F, c, g, d'

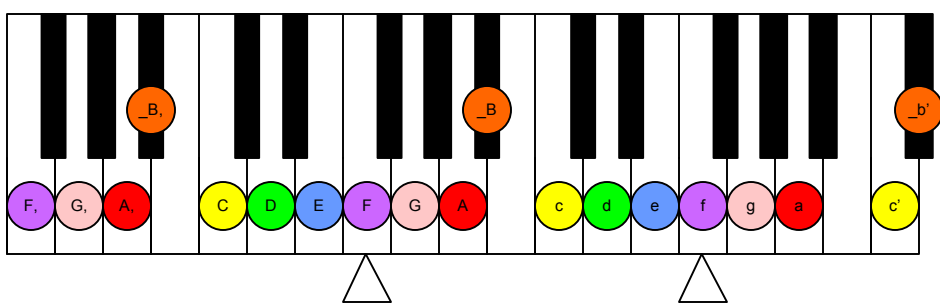
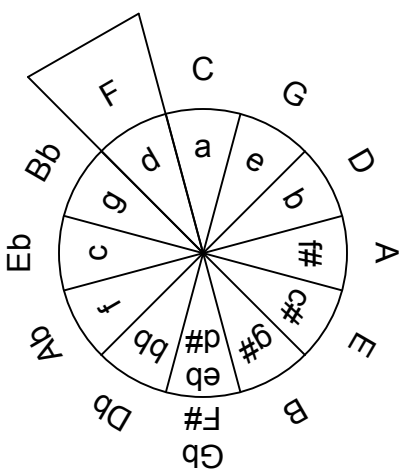
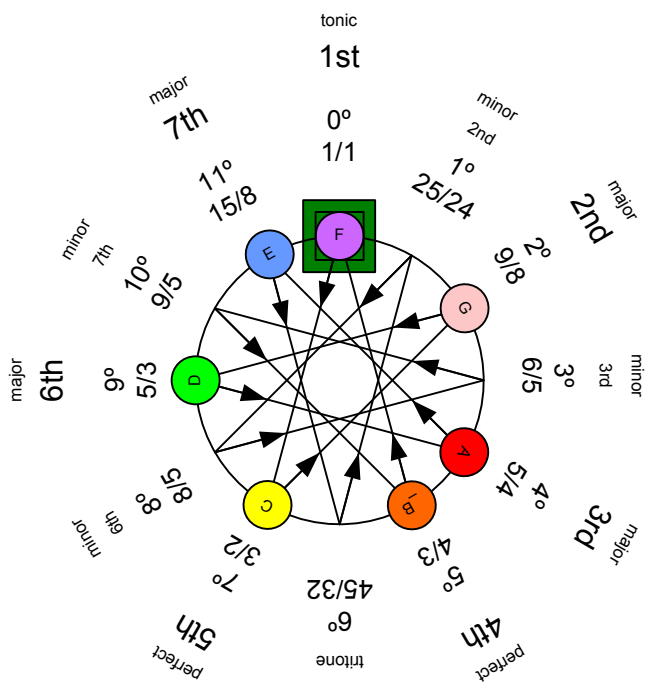
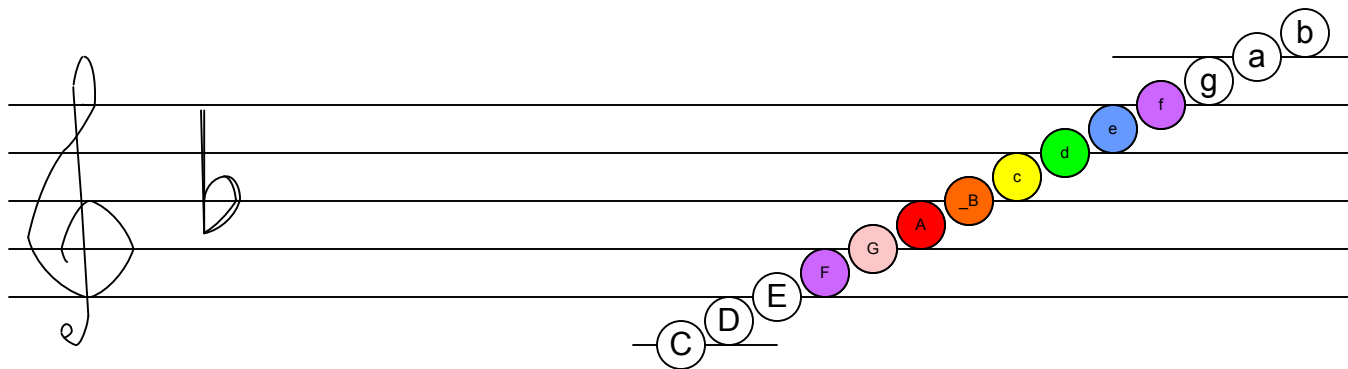
11

12 G, d

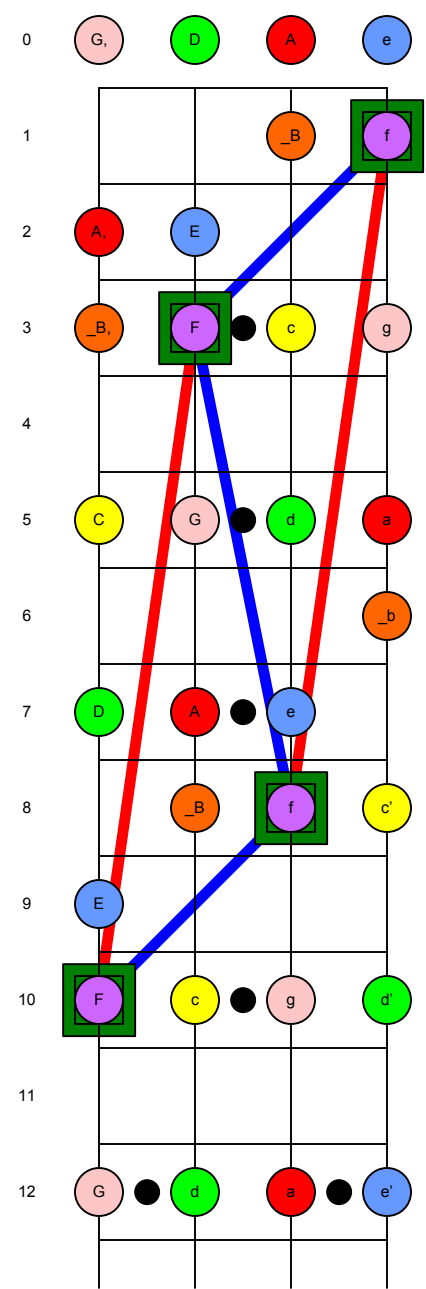


Bb

A  
F  
D  
B  
G  
E  
C

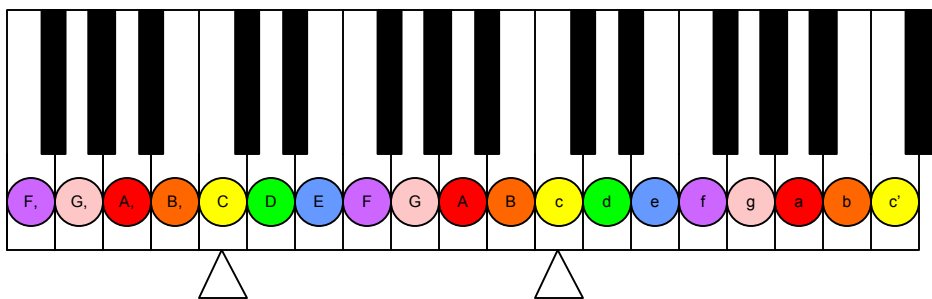
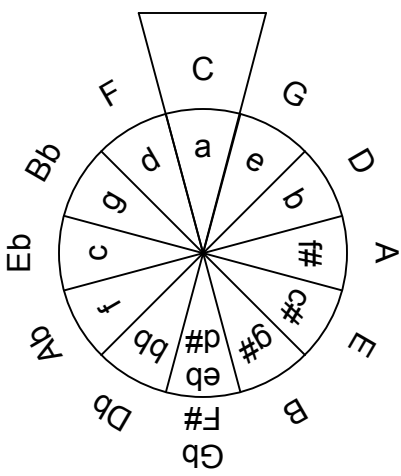
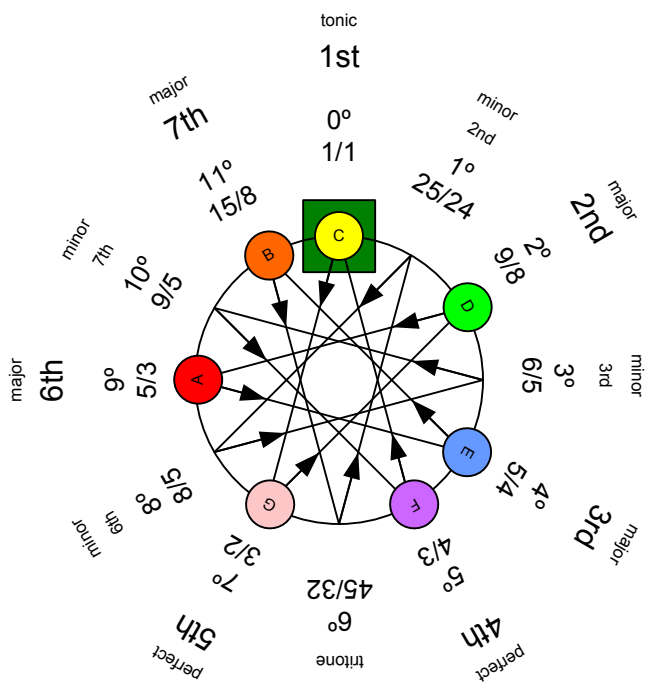
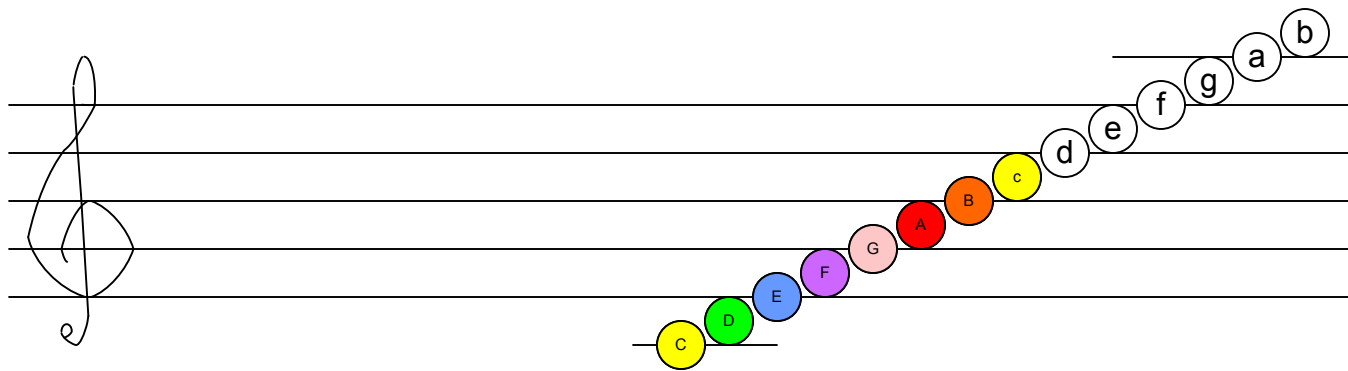


F  
(1 b)

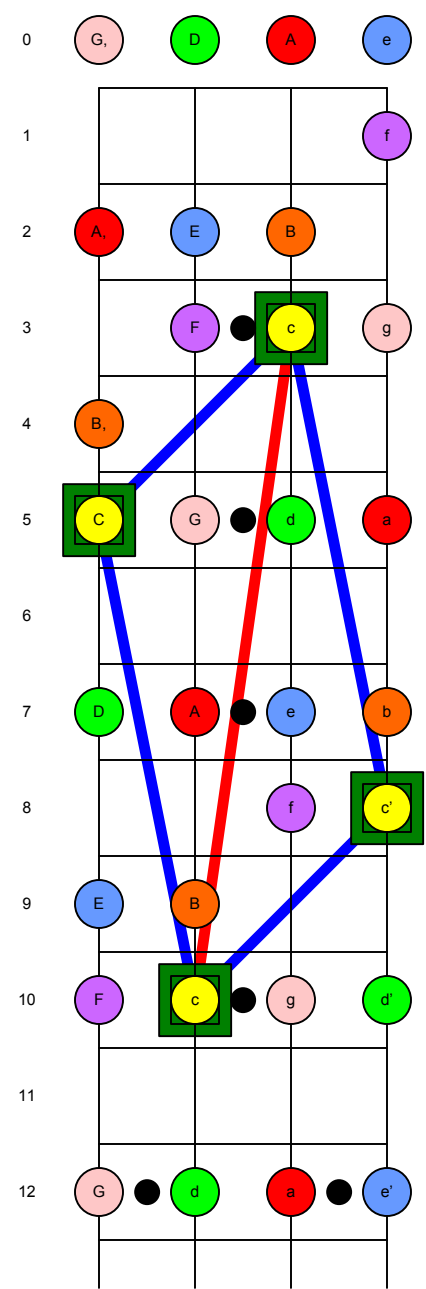


A  
F  
D  
B  
G  
E  
C

G  
E  
C  
A  
F  
D



C  
(0)



F#

A  
F  
D  
B  
G  
E  
C

G  
E  
C  
A  
F  
D

C, D, E, F, G, A, B, C, d, e, f, g, a, b

tonic  
1st  
0°  
1/1

major 7th  
11°  
15/8

minor 7th  
10°  
9/5

major 2nd  
1°  
9/8

minor 2nd  
2°  
16/15

major 3rd  
3°  
6/5

minor 3rd  
4°  
5/4

major 4th  
5°  
4/3

minor 4th  
6°  
3/2

major 5th  
7°  
3/2

minor 5th  
8°  
8/5

major 6th  
9°  
5/3

minor 6th  
10°  
9/5

tritone  
45/32

C, C#, D, D#, Eb, E, F, F#, G, G#, Ab, A, Bb, B, C

F#1, F#2, F#3, F#4, F#5, F#6

G (1 #)

0, 1, 2, 3, 4, 5, 6, 7, 8, 9, 10, 11, 12



F#  
C#

A  
F  
D  
B  
G  
E  
C

G  
E  
C  
A  
F  
D

tonic  
1st  
0°  
1/1

major  
7th  
11°  
15/8

minor  
7th  
10°  
9/5

major  
6th  
9°  
5/3

minor  
6th  
8°  
8/5

major  
5th  
7°  
3/2

tritone  
6°  
45/32

perfect  
4th  
5°  
4/3

major  
3rd  
4°  
5/4

minor  
3rd  
3°  
6/5

major  
2nd  
2°  
9/8

minor  
2nd  
1°  
25/24

D  
(2 #)

F#   G#  
C#

A  
F  
D  
B  
G  
E  
C

G  
E  
C  
A  
F  
D

e

C D E F G A B  $\hat{c}$  b

tonic  
1st

major 7th 1<sup>o</sup> 15/8  
minor 7th 10<sup>o</sup> 9/5  
major 2nd 2<sup>o</sup> 9/8  
minor 2nd 1<sup>o</sup> 25/24  
major 3rd 3<sup>o</sup> 6/5  
minor 3rd 4<sup>o</sup> 5/4  
major 3rd 3<sup>rd</sup> 4/3  
minor 3rd 5<sup>o</sup> 3/2  
major 6th 6<sup>o</sup> 5/3  
minor 6th 7<sup>o</sup> 9/5  
perfect 4th 4<sup>th</sup> 4/3  
tritone 6<sup>o</sup> 45/32

C G D A E B F# C# G# D# A# E# Bb F Cb Gb Db Ab Eb

A B C D E F G C

# A (3 #)

0 D A e  
1  $\hat{G}$  E B  $\hat{F}$   
2 A E B  $\hat{F}$   
3  
4 B  $\hat{F}$   $\hat{C}$   $\hat{G}$   
5  
6  $\hat{C}$   $\hat{G}$  d  
7 D A e b  
8  
9 E B  $\hat{F}$   $\hat{C}$   
10  
11  $\hat{F}$   $\hat{C}$   $\hat{G}$   
12 d A e

F# G#  
C# D#

A  
F  
D  
B  
G  
E  
C

G  
E  
C  
A  
F  
D

C D E F# G A B ^C D e f g a b

tonic  
1st  
0°  
1/1

major 7th  
11°  
15/8

minor 2nd  
1°  
25/24

major 2nd  
2°  
9/8

minor 3rd  
3°  
6/5

major 3rd  
4°  
5/4

minor 4th  
5°  
4/3

perfect 5th  
7°  
3/2

minor 6th  
8°  
8/5

major 6th  
9°  
5/3

minor 7th  
10°  
9/5

perfect 8th  
11°  
15/8

tritone  
6°  
45/32

C G D A E B

F C G D A E B

Bb Eb Gb Db

F# C# G# D# A# E#

# E (4 #)

0 A e

1 ^G, ^D

2 A, E B, ^f

3

4 B, ^F, ^c, ^g

5

6 ^C, ^G, ^d

7 A, e, b

8 ^D

9 E, B, ^f, ^c

10

11 ^F, ^c, ^g, ^d

12 a, e'

A F# G  
D C# G#  
B C# D#  
G A#  
E F D

C D E F G A B ^c ^d e ^f ^g b ^a

tonic 1st 0° 1/1

major 7th 11° 15/8

minor 7th 10° 9/5

major 2nd 9° 9/8

minor 2nd 1° 25/24

major 3rd 6° 6/5

minor 3rd 4° 5/4

major 4th 7° 4/3

minor 4th 6° 45/32

major 5th 9° 5/3

minor 5th 8° 8/7

major 6th 3/2

minor 6th 7°

## B (5 #)

F#   G#  
C#   D#   F   A#

## F# (6 #)